

CASE STUDIES

BRIDGER AUTOMATION

AWARD WINNING SMART HOME INTEGRATION AT "THE CORSO"

**OVERVIEW**

Bridger Automation (BA) has once again demonstrated its expertise in smart home integration, earning the prestigious **CEDIA Smart Home Awards (2024) for Best Integrated Home with "The Corso."** This marks the third smart home BA has completed for this particular client over the past decade. With a strong foundation of trust and understanding, BA was able to craft a state-of-the-art solution tailored to the client's evolving lifestyle and technological needs.

CLIENT RELATIONSHIP AND PROJECT SCOPE

Having worked with this client on two previous smart home projects, BA had a deep understanding of their preferences and expectations. Unlike many homeowners who may feel intimidated by advanced technology, this client embraced it, allowing BA to take an innovative approach to design and integration. As a trusted partner, BA efficiently navigated the design and implementation process, introducing new features to enhance both entertainment and functionality.

Key additions included:

- **Landscape speaker systems** for an immersive outdoor audio experience.
- **Power management solutions** to ensure a stable and secure home office network.
- **DALI-controlled lighting** to meet the client's preference for low-level feature lighting.

PERFORMANCE OBJECTIVES

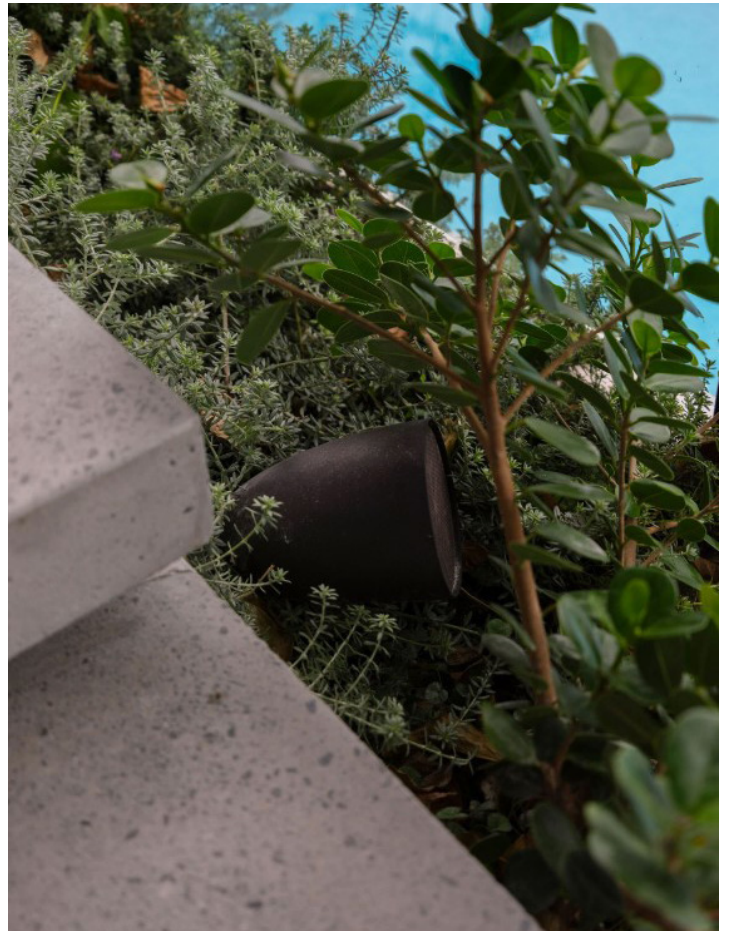
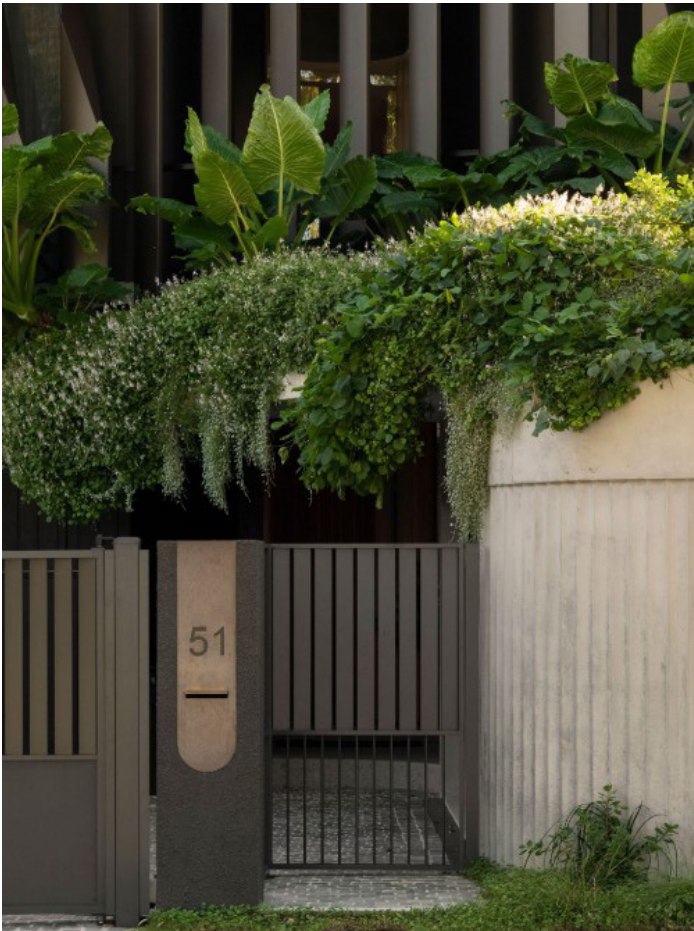
The primary goal of the smart home integration was to deliver high-performance technology that seamlessly complemented the architect's vision. Challenges included:

- **Audio Quality:** With minimal walls and a raw concrete design, the client required an immersive audio system that blended subtly into the home's aesthetic while delivering high-quality sound.
- **Security & Surveillance:** A multi-layered security system, including video surveillance, access control, and remote monitoring, was essential for peace of mind.
- **User-Friendly Control:** The system provided an intuitive, centralised control interface for managing all home functions, ensuring ease of use.

CASE STUDIES

BRIDGER AUTOMATION

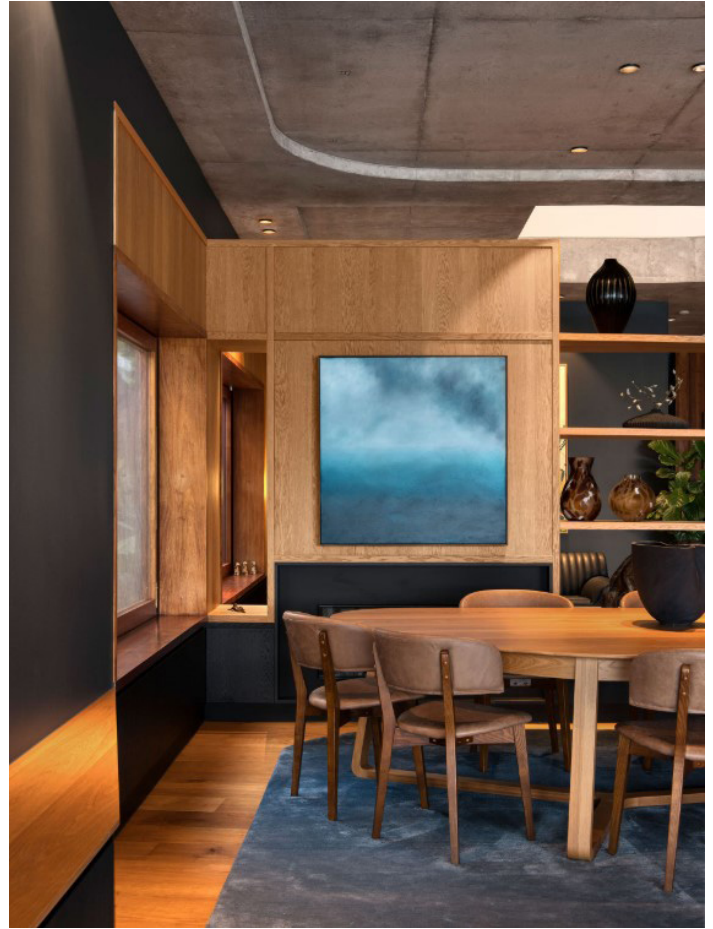
AWARD WINNING SMART HOME INTEGRATION AT "THE CORSO"



CASE STUDIES

BRIDGER AUTOMATION

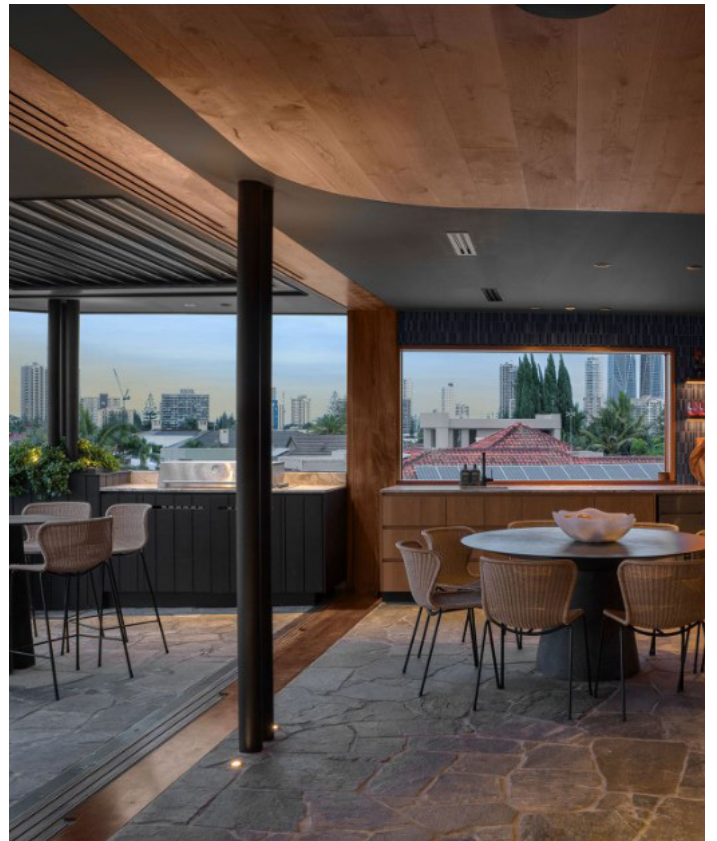
AWARD WINNING SMART HOME INTEGRATION AT "THE CORSO"



CASE STUDIES

BRIDGER AUTOMATION

AWARD WINNING SMART HOME INTEGRATION AT "THE CORSO"



CASE STUDIES

BRIDGER AUTOMATION AWARD WINNING SMART HOME INTEGRATION AT "THE CORSO"



CASE STUDIES

BRIDGER AUTOMATION AWARD WINNING SMART HOME INTEGRATION AT “THE CORSO”

SUBSYSTEMS INSTALLED AND INTEGRATED

Bridger Automation delivered a comprehensive, turn-key solution, covering multiple subsystems:

Audio & Video Distribution: Digital audio matrix and HDMI HDBaseT switcher.

Integration Control: A system for seamless management of lighting, security, climate, and entertainment.

Networking: Araknis architecture with OVRC integration for remote management.

Intercom: A door station for enhanced security and remote access.

Lighting Design & Control: DALI lighting system implemented with a control architecture.

Shade Control: Automated motorised curtains and blinds with scheduled privacy settings.

HVAC Control: Integration for HVAC system management.

Security & Access Control: PIR sensors, keypads, motion detectors, and keyless entry with unique access codes.

Pool & Spa Automation: Controlled filtration, heating, and blower activation.

Thermal & Power Management: WattBox IP power conditioner for clean, reliable voltage distribution.

AUTOMATION AND SMART SCENES

Bridger Automation designed intelligent automation scenarios to enhance daily living. Some key automated functions include:

Lighting Scenes:

Evening Scene: Gradual lighting transitions for ambiance and security.

Morning Scene: Adjusts blinds and lighting to optimise natural light without glare.

Entertainment Mode: A single-button function to activate dynamic lighting and audio for gatherings.

Goodnight Scene: Gradual dimming with a pathway guide to the bedroom.

TECHNICAL CONSIDERATIONS AND CHALLENGES

Wi-Fi Performance: With the home constructed primarily of steel, concrete, and glass, maintaining strong wireless signals was a challenge. BA conducted a site survey and implemented Araknis network architecture for seamless connectivity.

Thermal Management: Rack equipment was strategically placed with ventilated panels and AC Infinity cooling systems to prevent heat accumulation.

Power Stability: A WattBox IP power conditioner ensured clean, stable power to all integrated systems.

CONCLUSION

Bridger Automation's third collaboration with this client was a resounding success, blending cutting-edge technology with an intuitive user experience. “The Corso” serves as a benchmark for luxury smart homes, reinforcing BA's reputation as a leader in high-end home automation. By prioritising innovation, functionality, and seamless integration, BA continues to set the gold standard in smart home design.

Republished with permission.

Installation completed by:

Bridger Automation

www.bridgerautomation.com.au

0418 291 120

Amber Technology

www.ambertech.com.au