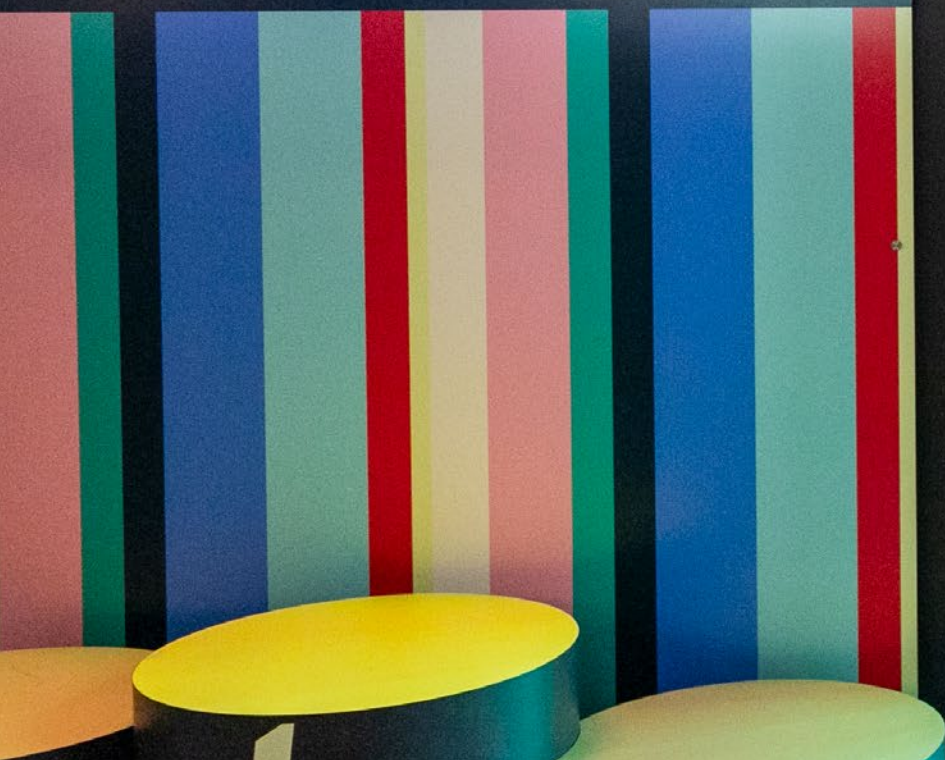




READY'S R READY'S R READY'S R



CASE STUDY



The Doyalson RSL

Impact Security & Electrical has guided The Doylo through tricky AV waters by hitching its wagon to RTI control and automation.



The Doyalson RSL

Impact Security & Electrical has guided The Doylo through tricky AV waters by hitching its wagon to RTI control and automation.



For over 20 years, Impact Security & Electrical has been the driving force behind the electrical and audiovisual systems at Doyalson RSL, better known as 'The Doylo'. Headed up by Adam McCall, the company has evolved from a primarily electrical background to a full-service AV provider. At the heart of this transformation lies RTI, the control and automation backbone of the club's AV network.

SEAMLESS SOLUTION

The Doylo is a sprawling venue featuring multiple entertainment zones and a gym. There's a phalanx of large-screen TVs driven by an IPTV network (that's progressively superseding the legacy RF modulation systems) and zoned audio — all of which require seamless and intuitive control. According to McCall, RTI has proven to be the

most flexible and reliable control platform for the club's needs.

"The whole place is run off RTI and iPads," McCall explains. "We've learned RTI inside out, and it's now our go-to for any automation required on commercial projects. Every RTI product, from touchscreens to RS232 controllers, is deployed throughout the venue."

MOVE TO IPTV

One of the standout upgrades at Doylo has been the transition to an IP-based TV distribution system. McCall and his team implemented an IPTV solution with LG Hotel UR640s displays, all centrally controlled via RTI.

"We spent two and a half months programming it," McCall recalls. "Instead of a coax system, we installed an IP-based HDMI encoding system from



Electrocraft. Now, all 30 x LG commercial TVs can be controlled via RTI over a single Cat5 connection. Managers can simply grab an iPad, turn on any screen, and change channels instantly.”

RTI HITS THE GYM

The gym, located beneath the club’s new SportsPlus attraction, features three group training rooms, including a high-impact energy training space. Impact Security & Electrical integrated RTI with Xilica DSP and Enttech LED lighting, all synchronised to the beat of the music.

“We installed Xilica in the gym and were blown away by how much better it the audio was compared to the previous system,” McCall says. “RTI gives us the flexibility to integrate DSP control, lighting, and AV automation all in one place.”

REMOTE IN

McCall and his team have also implemented remote monitoring capabilities, ensuring that system issues can be resolved quickly.

“We’ve got a computer onsite called ‘Mission Control’ that we dial into pretty much every day.

The BMS runs through RTI as well, so we can monitor and adjust settings remotely. If a manager has trouble turning on a mic or switching a display, we can jump in and fix it in real time without rolling a truck. Funny how those issues always occur at 9pm on a Friday!”

RTI HITS THE GYM

The gym, located beneath the club’s new Smokehouse Beer Garden, features three group training rooms, including a high-impact energy training space. Impact Security & Electrical



integrated RTI with Xilica DSP and Enttech LED lighting, all synchronised to the beat of the music.

“We installed Xilica in the gym and were blown away by how much better it the audio was compared to the previous system,” McCall says. “RTI gives us the flexibility to integrate DSP control, lighting, and AV automation all in one place.”

REMOTE IN

McCall and his team have also implemented remote monitoring capabilities, ensuring that system issues can be resolved quickly.

“We’ve got a computer onsite called ‘Mission Control’ that we dial into pretty much every day. The BMS runs through RTI as well, so we can monitor and adjust settings remotely. If a manager has trouble turning on a mic or switching a display, we can jump in and fix it in real time without rolling a truck. Funny how those issues always occur at 9pm on a Friday!”

EXPANDING THE ECOSYSTEM

With plans to interconnect multiple RSL clubs under a single automation framework, McCall sees RTI as the perfect solution for scalability.

“One of our next big projects is setting up a VPN between this club and two others, so we can automate content distribution across all locations,” he explains. “For example, during a Christmas raffle, we’ll be able to stream the event to all clubs in real time, with synchronised audio and video.”

FUTURE PROOFING

For McCall, RTI’s adaptability is what sets it apart. “We’ve been using RTI for 15 years, and it’s still our top choice for commercial automation. It handles everything from IPTV to DSP control and large-scale lighting integration. It’s bulletproof.”

As Doylo continues to expand, Impact Security & Electrical remains committed to refining and evolving the club’s AV infrastructure – powered by RTI, and driven by a passion for seamless automation.

Doyalson RSL: doylo.com.au

Impact Security & Electrical: impactse.com.au

Amber Technology (RTI, Xilica): ambertech.com.au